

MORTARS



M-GRAY/M-WHITE

Colour	Packaging	Consumption
Grey, White	Paper Bag 25 Kg	2 m² for bag

DESCRIPTION

Ready-to-use cement-based mortar, designed for bonding and building walls with bricks and silicate blocks. It is suitable for use in both exterior and interior environments, characterized by easy application and high performance.

PRODUCT CHARACTERISTICS

- Cement-based mortar for bonding and building walls with lightweight silicate blocks.
- Ready-to-use, facilitating work and saving time.
- Classified according to EN 998-2 standard, ensuring quality and reliability.
- Suitable for both exterior and interior environments, providing strength and stability.
- Easy to apply, allowing for fast and efficient work with a thin layer.

FIELD OF APPLICATION

Suitable for bonding bricks and silicate blocks for wall construction in both interior and exterior environments. Applied in a thin layer, it ensures good leveling of the walls and a strong bond between the materials.

ADVANTAGES

Ease of use and excellent consistency for strong and durable adhesion. Offers resistance and stability for high quality masonry. Suitable for both indoor and outdoor use, providing a stable bond that is resistant to weather conditions.

PRODUCT PREPARATION

Make sure the bricks are clean and free of dust. Mix 5.5–6 liters of water with a 25 kg bag using a mechanical mixer or by hand until a homogeneous, lump-free mixture is obtained. The product is suitable for application both manually and with machinery.

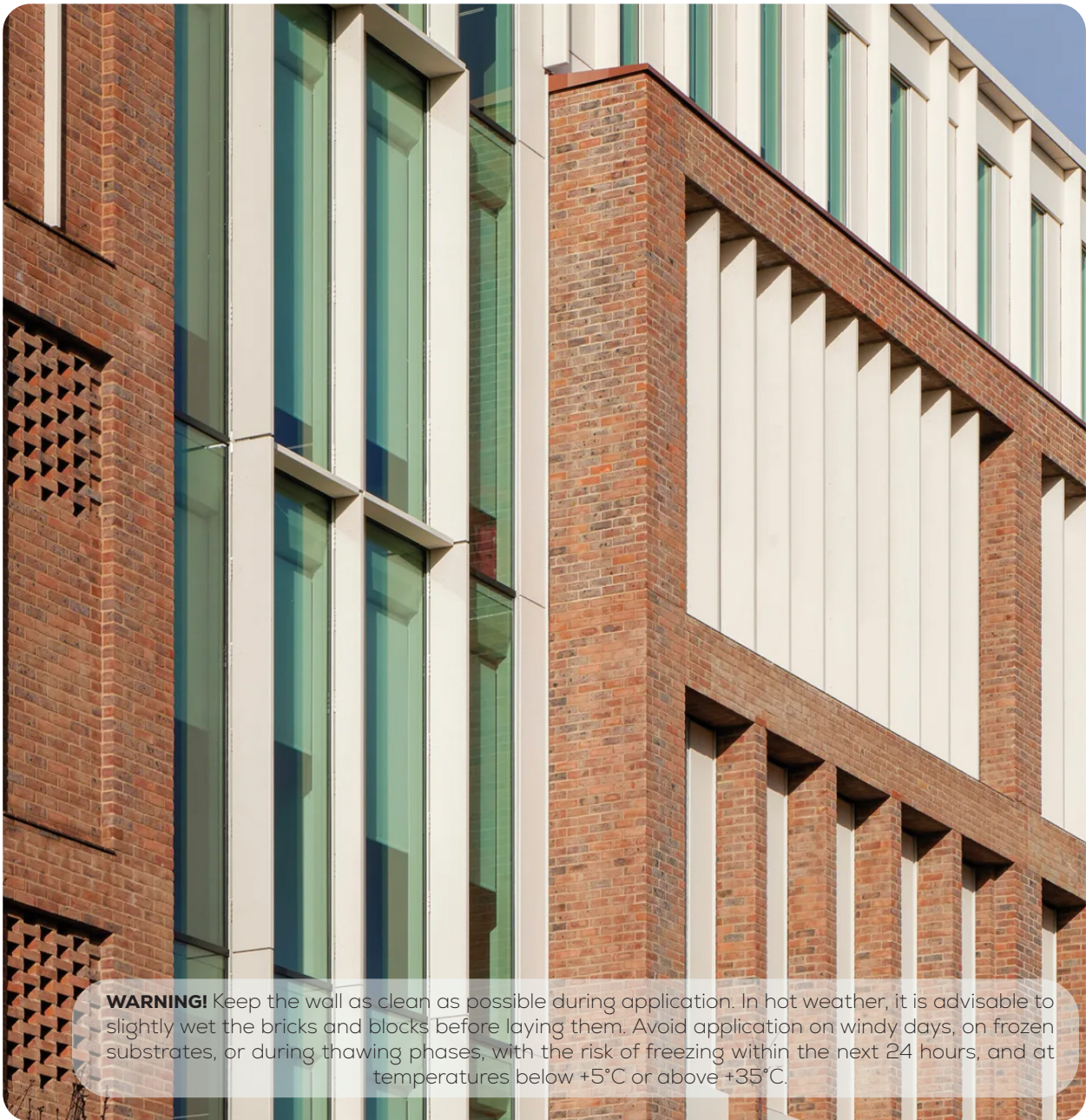
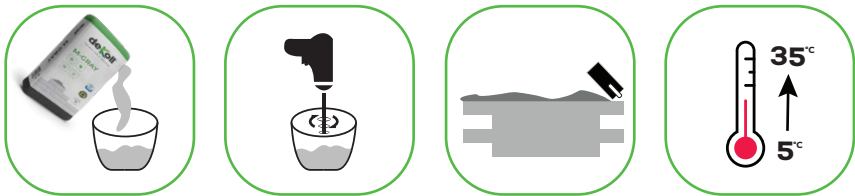
APPLICATION

Once you have aligned the bricks properly, apply the product manually up to the desired thickness. The optimal working temperatures are between 5°C and 35°C. For subsequent coatings, it is important that the substrate has reached proper drying maturity.



TECHNICAL DATA

Appearance: Powder	Storage Time: 12 months from the production date
Packaging: 25 kg bag, large bag 1000 kg	Application thickness: 5-10 mm
Colour: Grey, White	Application Temperature: +5°C to +35°C
Granulation: 1.2 mm	Water for mixture: 5.5-6 liters of water for 25 kg bag
Storage: Keep stored in dry places on wooden pallets	Dry bulk density: 1.7 gr/cm ³



WARNING! Keep the wall as clean as possible during application. In hot weather, it is advisable to slightly wet the bricks and blocks before laying them. Avoid application on windy days, on frozen substrates, or during thawing phases, with the risk of freezing within the next 24 hours, and at temperatures below +5°C or above +35°C.