

TECHNICAL DATA

## PRODUCT : EPS GF150

### DESCRIPTION:

EPS GRAFIT GF 150 is an insulating panel made of expanded polystyrene, containing graphite, with a closed-cell structure, self-extinguishing class E, marked with ETICS according to the EN 13163 standard. It also complies with CAM – Minimum Environmental Criteria, through the use of post-consumer recycled EPS. Suitable for both new and old buildings, on vertical and horizontal surfaces.

### CHARACTERISTICS:

1. Shape stability during atmospheric fluctuations.
2. Homogeneous density.
3. Hydrophobic material.
4. Acoustic insulation.
5. High compressive strength.
6. Very low thermal conductivity.

### THE BASE:

During the work phase, the ambient and surface temperatures should not drop below +5°C and should not exceed +35°C. Throughout the entire duration of the work for gluing the graphite, leveling, and until the completion of the fixing phase, the surface should be protected with appropriate cloths that provide shade. Protect the insulating panels from moisture and apply the leveling layer with mesh at the proper time.

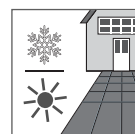
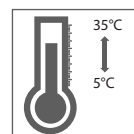
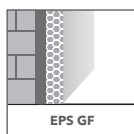
### APPLICATION:

The product to be used for adhering the EPS GF150 thermal insulation boards must be suitable for this system. The base before gluing the polystyrene should be dry, stable, and free from foreign materials (dust, oil, soot, algae, salts, release agents, etc.). Remove any release layers and consolidate surfaces that are delicate or prone to detachment, which should be repaired in advance. The adhesion of the polystyrene to the base is achieved by two methods:

- The strip method around (40%) of the adhesive surface and dots in the middle.
- For smooth surfaces, apply the adhesive across the entire surface of the panel using a notched trowel.

Then, the boards are pressed together by applying a certain pressure. After the adhesion process, the EPS GF150 thermal insulation boards should be leveled and covered after 36/48 hours.

### IMAGES:



TECHNICAL DATA

**PRODUCT : EPS GF150**

**TECHNICAL SHEET**

**NORMS**

Specification:	EPS GF 150 Thermal Insulation Panel	
Colour:	Black	EN 13163
Packaging:	Polyethylene	
Measuring Unit:	kg/m <sup>3</sup>	
Standard:	EN 13163	
Grain Content:	Pentan Gas	
Panel Dimensions:	1000mm x 500mm	EN 823:2013
Surface Area of the Tile:	0.5m <sup>2</sup>	EN 822
Compressive Strength:	(10% deformation) 150 kPa (10 t/m <sup>2</sup> )	EN 826
Thermal conductivity coefficient (λ):	0.0298 W/mK	EN 12667
Aging Time:	28 days from the production date	
Fire Reaction:	Class E ( Self-extinguishing )	EN 13501-1:2019
Width Tolerance W:	± 2mm	EN 822
Length Tolerance L:	± 2mm	EN 822
Thickness Tolerance T:	1mm	EN 823
Surface Tolerance S:	± 2mm	EN 824

## CAREFUL

During the transport and installation phase, take maximum care and work in safe conditions. During the work phases, the ambient temperature and the surface temperature should not be lower than +5°C and higher than +35°C. Follow the manufacturer's current instructions and the safety data sheet. The product is intended for professional use. Do not mix or add other elements during preparation and application. Any changes to the above instructions must be explicitly authorized by the service through written and signed approval.

During the working and curing/drying phase, the air, material, and surface temperature should remain between +5°C and +35°C. Protect the facade from direct sunlight, rain, and strong winds (e.g., by using protective mesh for scaffolding). High temperatures (e.g., > +35°C) can also change the product's working characteristics. High relative humidity and/or low temperatures (e.g., applications in winter) may significantly extend the drying time and cause uneven color changes. Protect the insulating panels from moisture and apply a covering layer as soon as possible; panels with color changes and/or damage should be replaced.

Color uniformity is guaranteed only by using products from the same production batch and the same production date. Significant color changes may also occur due to different surface characteristics, application, and atmospheric temperature and humidity. Materials stored beyond the specified time limit may experience color changes. Complaints regarding color and/or characteristic changes after application will not be accepted. The technical data refers to base products. The use of natural raw materials may cause slight changes in the specified values, which can vary depending on site conditions.

The product should not be exposed to poor weather conditions for extended periods and should be stored in appropriate environments. More safety details are also included in our separate safety data sheets. These sheets should be read carefully before use. Follow the current national work instructions. This technical sheet cancels and replaces previous versions. DEKOLL reserves the right to make changes and updates without prior notice. The information included in this technical sheet reflects our current technical knowledge and sector experience; it does not, in any case, define DEKOLL's responsibility for any defects and/or damages of any kind arising from inappropriate or incorrect use of the product.