

# TILE ADHESIVES



# STRONGKOLL MAXI C2TES2

Colour	Packaging	Consumption
Grey	25 KG	4-5 KG

## DESCRIPTION

High-performance cement-based adhesive (C2) with very high flexibility (S2), long open time (E), and no vertical slip (T). Classified as adhesive C2TES2 according to standard **EN 12004**.

## APPLICATION FIELD

Suitable for bonding marble tiles, stone tiles, glass bricks, thick tiles, and cement-based substrates, for both floors and walls, in indoor and outdoor environments with high humidity. Recommended for façades, terraces, or as with underfloor heating, environments subject to vibrations and continuous pressure. Also suitable for tile-on-tile applications (in this case, the existing tiles must be stable and immobile), for industrial environments, and for uneven or unstable substrates (thanks to its high elasticity). Suitable for tiles ranging in size from 5 to 300 cm.

## SPECIFICATIONS

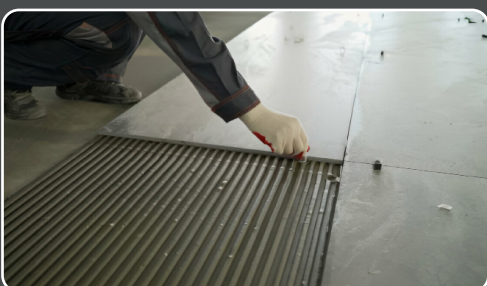
Composed of high-quality marble sand with selected granulometry, synthetic resins, and special modified additives. The advanced granulometric distribution technology and special components give this product excellent flexibility and workability, making it ideal for bonding all types of tiles. This adhesive offers outstanding flexibility, a strong and durable bond, and ensures high performance even under challenging conditions.

## MIXING METHOD

Mix 7-7.5 liters of clean water with 25 kg of Strongkoll Maxi. Stir the mixture with an electric mixer until a smooth, lump free consistency is obtained. Let it rest for 5 minutes, then stir again before use. The working time of the mixture is 2-3 hours under normal temperature conditions (23°C).

## FIELD OF APPLICATION

Suitable for bonding marble tiles, stone tiles, glass bricks, thick tiles, klinker, and terracotta. For floors and walls, both indoors and outdoors. Recommended for façades, terraces, areas with underfloor heating, environments subject to vibrations and continuous pressure. Also suitable for tile-on-tile applications (in this case, the existing tiles must be stable and immobile), industrial environments, and uneven or unstable substrates (thanks to its high elasticity). Suitable for high-traffic substrates, plasterboard, and waterproofing layers such as Hidrofix II.

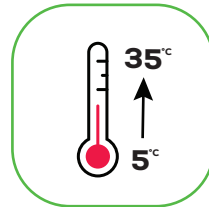
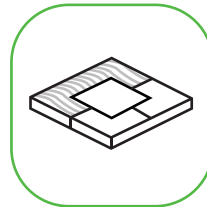


## APPLICATION

It is recommended to first spread the product using the smooth side of the trowel to ensure an even distribution, then use the notched side. Application is carried out with a trowel appropriate to the type of tile being installed. Tiles should be placed by applying slight pressure to ensure that the entire surface of the tile is covered with adhesive. The open time of the product under normal atmospheric conditions is 35–40 minutes at 23°C. Weather conditions can affect the drying time of the product. Care must be taken to ensure that the adhesive does not form a surface film. If this occurs, the trowel should be passed over the adhesive again. Tiles should not be installed with tight joints. They must be laid in a manner that suits their dimensions.

## TECHNICAL DATA

<b>Appearance:</b> Powder	<b>Application Temperature:</b> +5°C to +35°C
<b>Packaging:</b> 25 kg paper bags on 1350 kg pallets	<b>Adjustment Time:</b> 35–40 min
<b>Colour:</b> Grey	<b>Filling of Wall Joints:</b> After 8 to 12 hours
<b>Consumption for small formats:</b> 2–3 kg/m <sup>2</sup>	<b>Filling of Floor Joints:</b> After 24 hours
<b>Consumption for big formats:</b> 4–5 kg/m <sup>2</sup>	<b>Walkable:</b> After 24 hours
<b>Storage:</b> Store in dry places on wooden pallets	<b>Adhesive Strength after 28 days:</b> ≥2.6N/mm <sup>2</sup> (EN 1348 )
<b>Storage Time:</b> 12 months from the production date	<b>AS After Water Immersion:</b> ≥1.4 N/mm <sup>2</sup> (EN 1348)
<b>Bulk Density:</b> 1.65–1.75gr/cm <sup>3</sup>	<b>AS After Heat Aging:</b> ≥2N/mm <sup>2</sup> (EN 1348)
<b>Reaction to fire:</b> Class E	<b>AS After Freeze-Thaw Cycles:</b> ≥1.2 N/mm <sup>2</sup> (EN 1348)
<b>Water for mixture:</b> 7–8 liters of water for 25 kg	<b>Deformability:</b> 5 mm
<b>pH of mixture:</b> 12	<b>Slip Resistance:</b> ≤0,5 mm



**WARNING!** Both low and high temperatures can alter the working characteristics of the product (slowing down or speeding up the drying process). For very large tile formats, apply a double layer of adhesive on both the tile and the substrate. Protect the substrate for at least 24 hours after applying the adhesive from heavy rain, frost, and strong sunlight. For large tile formats, grouting should be done 3–5 days after installation, only if waterproofing has been completed.