

FILLING PLASTER



PREMIX

Colour	Packaging	Consumption
Grey	Paper Bag 25 Kg	1.2 m ² /bag

DESCRIPTION

Cement-lime filler plaster for interior and exterior walls, ceilings, and facades. Suitable for all types of bases such as brick walls, concrete block walls, sandstone, and limestone. Not suitable for bases with continuous moisture. Compared to traditional mortar, it reduces application quantity by 25%.

FIELD OF APPLICATION

Used on all types of bases: red bricks, perforated bricks, high-porosity bricks, stones, etc. First coat for filling ceilings and interior and exterior walls; second coat for eliminating cracks. For high-porosity silicate bricks, apply acrylic primer diluted 1:2 with water before plastering to remove dust. On concrete surfaces, diluted concrete primer (10–20%) is recommended.

SUBSTRATE PREPARATION

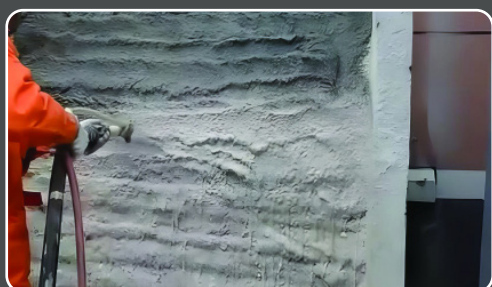
The base must be clean, free of dust, oils, or residues that prevent bonding between layers. Clean the base mechanically. Composite bases, meaning those with electrical parts and brick walls, should first be sprayed with Dekoll spray. Brick joints must be sealed beforehand to ensure crack free coverage.

PRODUCT PREPARATION

The product is suitable for manual and machine use. Mix 5.5–6 liters of water with one 25 kg bag of PREMIX using a mechanical mixer or machine until a smooth, lump free mixture is achieved.

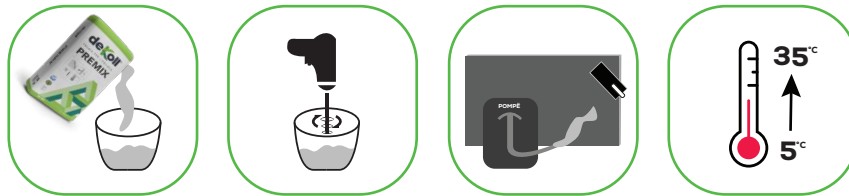
APPLICATION

Apply the prepared product with the appropriate trowel and level it with a straightedge. After drying, it is necessary to roughen the plaster surface before applying finos. Optimal working temperatures are from +5°C to +35°C. For subsequent coatings, it is important that the base has fully cured and dried.



TECHNICAL DATA

Appearance: Powder	Product working time: 2 hours
Packaging: 25 kg paper bags on pallets of 1350 kg.	Dry mortar density: 1.5-1.6 gr/cm ³
Colour: Grey	Application Temperature: +5°C to +35°C
Granulation: 1.2 mm	Water Mixture: 5.5-6 liters of water for 25 KG
Consumption: 1.2 m ² /bag/1.5 cm thickness	Material application: By hand or machine, 1-2 hands
Storage: Store in dry places on wooden pallets	Waiting time for second hand: 24 hours
Storage Time: 12 months from the production date	Compressive strength after 28 days: ≥ 3.5 N/mm ²
Minimum application thickness for walls: Up to 10mm	Compressive strength: ≥0.5 N /mm ²
Minimum application thickness for ceilings: Up to 7-8mm	Water Absorption: WO
Thermal conductivity: 0.61 W/mK	Reaction to fire: Class A1



For all the cases mentioned above during the working and curing phase of the product, the temperature should not be lower than +5°C or higher than +35°C. Both low and high temperatures can alter the working characteristics of the product (slowing down or speeding up drying). The dilution ratio of primers with water must also be respected.