

MORTARS



PREGIPS

Colour	Packaging	Consumption
White	Paper Bag 25 Kg	3 m ² /bag/ 10 mm thickness

DESCRIPTION

Gypsum-based plaster for manual and machine application. PREGIPS is a pre-mixed, lightweight mortar containing high quality aggregates and specific additives.

FIELD OF APPLICATION

PREGIPS is ideally suited for application on porous concrete surfaces, walls built with various materials such as porous or standard bricks. It is used to create smooth, easily structured surfaces on walls and ceilings for interior spaces. It is a single-layer plaster suitable for all surfaces, including concrete and previously plastered load-bearing surfaces. It can be applied in all indoor environments, from attic to basement, with normal air humidity, including kitchens and bathrooms. It can serve as a base for further finishing with paint or wallpaper, tiling, or decorative plaster.

SUBSTRATE PREPARATION

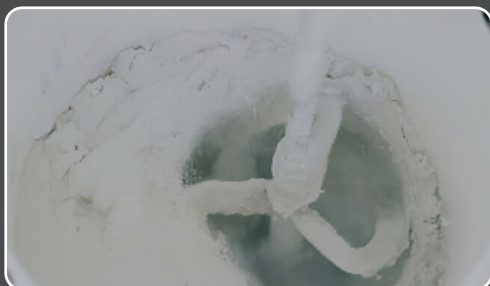
The substrate must be clean, free from dust, oils, or residues that could interfere with adhesion between layers. Cleaning of the substrate should be done mechanically. Brick joints should be filled beforehand to ensure a crack-free coating. For smooth concrete substrates, surface treatment with concrete primer is recommended, while for highly absorbent or dusty substrates, treatment with acrylic primer is advised.

APPLICATION METHOD

The product is suitable for both manual and machine application. Preparation is carried out through intensive mixing in a plastering machine. The amount of water must be adjusted in such a way as to achieve a smooth consistency, which allows the material to be applied at the desired thickness without difficulty on the available surface. The creamy gypsum mixture flows easily from the pump nozzle and creates a uniform plaster layer that is easy to spread.

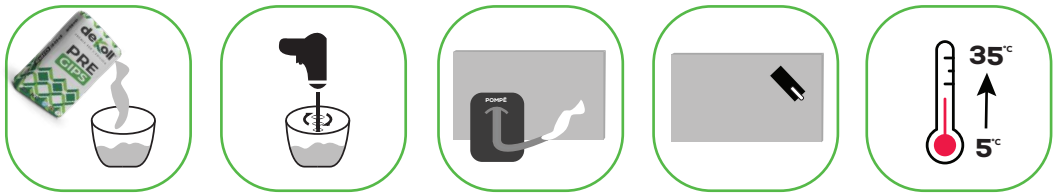
APPLICATION

Machine-applied plasters are generally applied in layer thicknesses ranging from 10 to 35 mm. The gypsum-based plaster is sprayed evenly using a spray gun head at the desired thickness. The spraying pressure ensures better adhesion of the plaster to the surface, as the gypsum penetrates deeply into the joints of the substrate to be plastered. Once the material is sprayed, it is spread horizontally and vertically. As the layer begins to set, the surface is leveled using a straightedge or trowel to eliminate uneven areas. If the final layer will be a decorative plaster or the surface will be tiled, the surface may be only leveled and not smoothed. After the plaster has sufficiently set, it is lightly moistened and smoothed with a sponge float or sanding machine.



TECHNICAL DATA

Appearance: Powder	Working time: 1-2 hours
Packaging: Paper bag 25 kg on pallets of 1350 kg	The minimum application thickness for ceilings: 8 mm
Colour: White	Dry Mortar Density: 0.95 gr/cm³
Consumption: 3 m²/bag/10 mm thickness	Application Temperature: +5°C to +35°C
Storage: Store in dry places on wooden pallets	Material Application: By hand or machine, 1 hand
Storage time: 12 months from the production date	Compressive strength after 28 days: ≥ 2.5N/mm²
The minimum application thickness for walls: 10 mm	Thermal conductivity: 0.34 W/mK
Reaction to fire: Class A1	



For all the cases mentioned above, during the application and curing phases of the product, the temperature should not be lower than +5°C or higher than +35°C. Both low and high temperatures can affect the working properties of the product (slowing down or speeding up the drying process).
Duhën respektuar dhe raporti I hollimit me uje te Astareve.