

TILE ADHESIVES



ECO+ C2E

Colour	Packaging	Consumption
White, Grey	25 KG	3-5 KG

TILE ADHESIVE - C2E

Cement-based tile adhesive (C), with improved adhesive strength and extended open time (E), formulated with high-quality carbonate sand and specific additives to ensure strong and durable bonding. Classified as a C2E adhesive according to the **EN 12004** standard, this adhesive is characterized by: Excellent workability. High resistance to moisture and frost.

FIELD OF APPLICATION

- Suitable for **ceramic tiles, porcelain gres, clinker, marble**, and other low-absorption tiles.
- Applied for bonding on substrates with slight movement, such as balconies and bathrooms, for floors and walls in both **indoor and outdoor areas** where moisture is present.
- Ideal for **high-traffic floors** such as in schools and hospitals, as well as in commercial and industrial environments.
- Suitable for bonding medium to large-format tiles from **5 to 80 cm**.

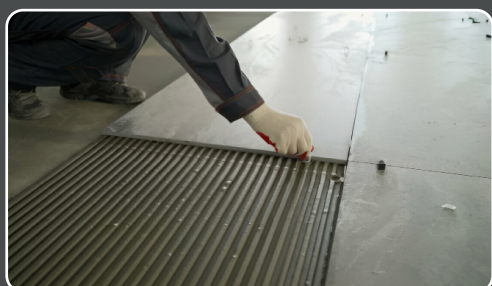
This adhesive is the ideal choice for construction projects requiring durability and high resistance under varying environmental conditions.

MIXING METHOD

Mix 6.5-7 liters of clean water with 25 kg of Eco+. Blend the mixture using an electric mixer until a smooth, lump-free consistency is obtained. Let it rest for 10 minutes, then mix again before use. The working time of the mixture is 2-3 hours under normal temperature conditions (20°C).

SUBSTRATE PREPARATION

Cement-based substrates must be stable, resistant, and even, free from oil, dirt, and paint residues, and must have reached their proper curing time. Traditional cement floors with normal setting time should be allowed to cure for at least 28 days, while substrates with traditional plaster should be left to dry for at least 14 days. Major uneven surfaces or large cracks must be repaired in advance. All types of substrates must be cleaned mechanically before applying the product. Before application, the surface should be lightly sprayed with water to ensure optimal adhesion and working time.

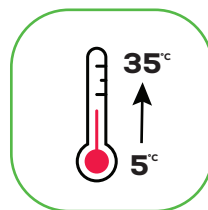
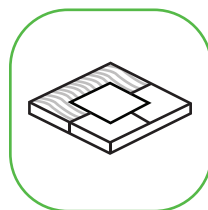


APPLICATION

First, the product is recommended to be spread using the flat side of the trowel to ensure an even distribution, followed by the notched side. Application should be done using a trowel suitable for the type of tile being laid. Tiles should be placed by applying light pressure to ensure full coverage of the tile's underside with adhesive. Under normal atmospheric conditions, the open time of the product is approximately 35 minutes at 23°C. Weather conditions may affect the drying time of the product. It is important to ensure that the adhesive does not form a surface film. If a film has formed, the adhesive should be reworked with the trowel before laying the tile. A 5 mm gap should be left at junctions with vertical walls.

TECHNICAL DATA

Appearance: Powder	Adjustment time: 30 min
Packaging: 25 kg paper bag on pallets of 1350 kg.	Filling of Wall Joints: After 8 to 12 hours
Colour: White, Grey	Filling of Floor Joints: After 24 hours
Consumption: 3-5 kg/m ²	Walkable: After 24 hours
Storage: Store in dry areas on wooden pallets.	Adhesive Strength after 28 days: ≥1 N/mm ²
Storage Time: 12 months from the production date	AS After Water Immersion: ≥1 N/mm ²
Bulk Density: 1.5-1.6 gr/cm ³	AS After Heat Aging: ≥1 N/mm ²
Reaction to fire: Class A1	AS After Freeze-Thaw Cycles: ≥1 N/mm ²
Water for mixture: 6 liters of water for 25 kg	AS after 30 min: ≥0,5 N/mm ²
pH of mixture: 13	Application Temperature: +5°C until +35°C



WARNING!

- Low and high temperatures can affect the product's working properties by slowing down or accelerating its drying process. Do not use the product in the following conditions:
- On wooden, metal, PVC, or other non-cement-based surfaces.
 - For tiles that are large and heavy.
 - In areas with underfloor heating, constant moisture, or on substrates subject to unstable vibrations.
 - In extreme temperatures (either high or low) or in strong wind conditions.